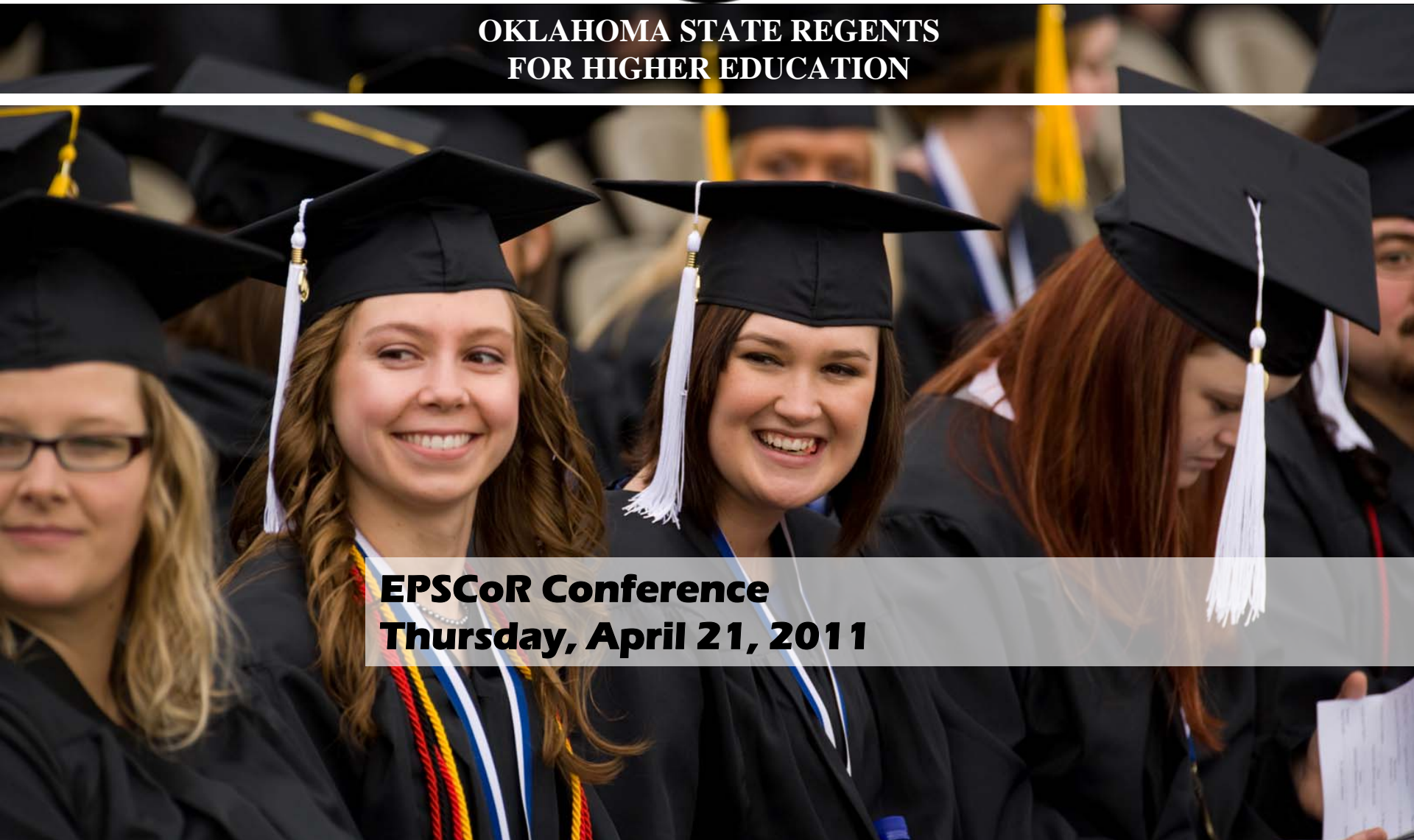




**OKLAHOMA STATE REGENTS
FOR HIGHER EDUCATION**

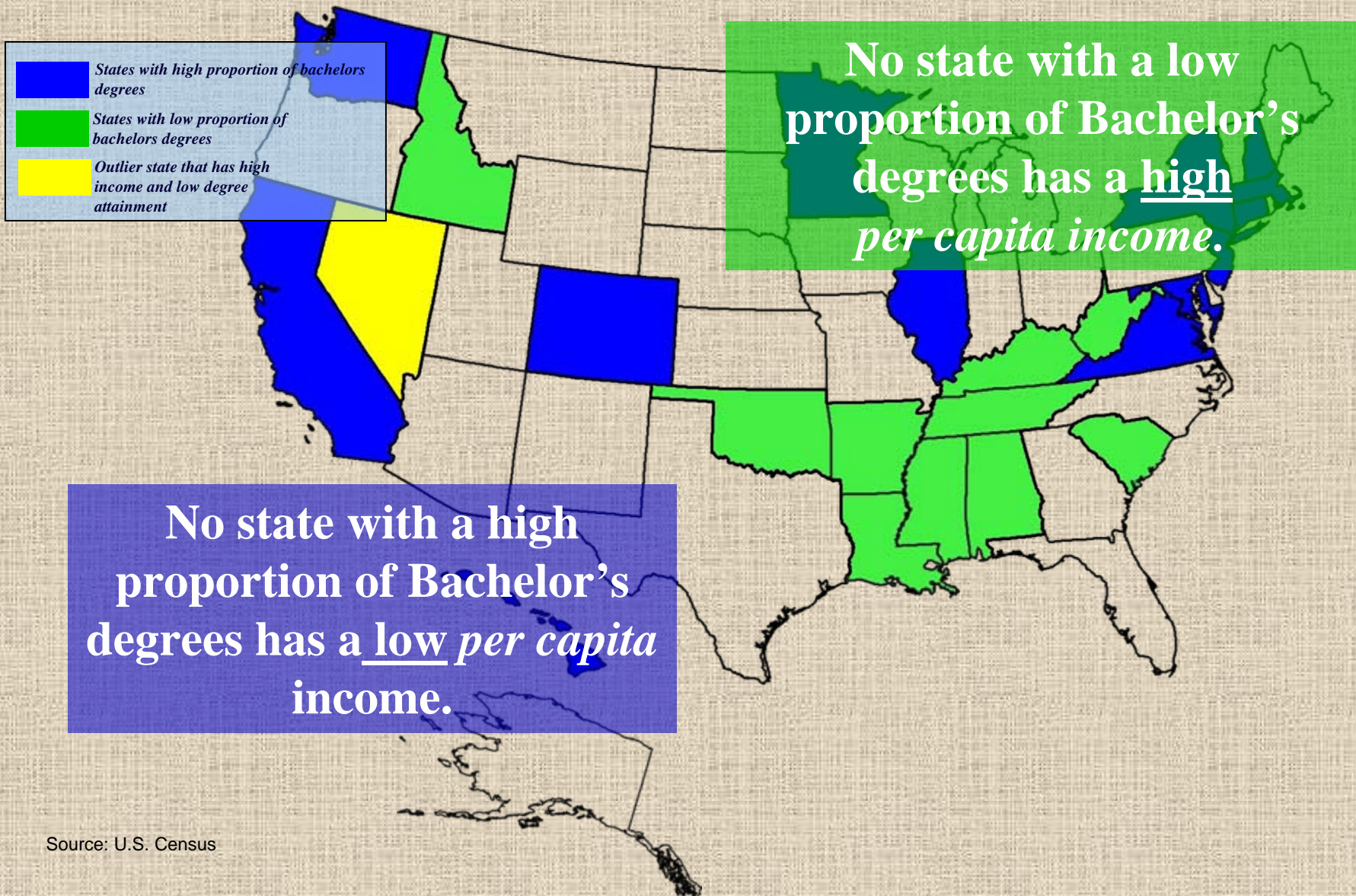


**EPSCoR Conference
Thursday, April 21, 2011**

Nationally, more than one-quarter (27.9 percent) of adults 25 and older have a bachelor's degree or more, compared to Oklahoma at 22.7 percent.

OKLAHOMA

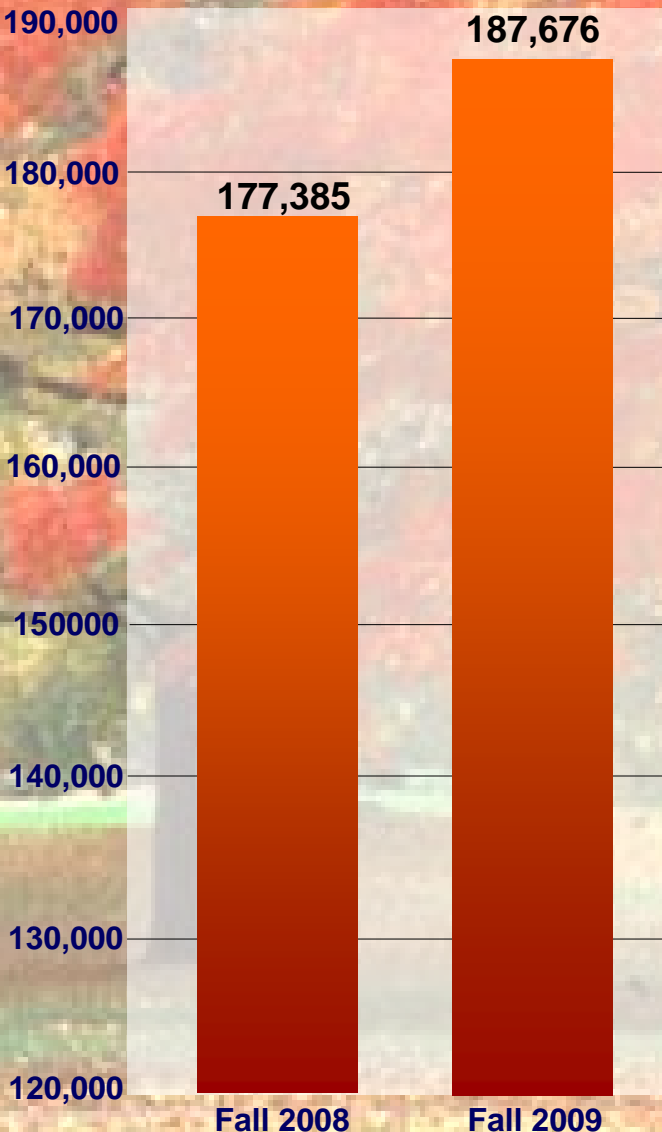
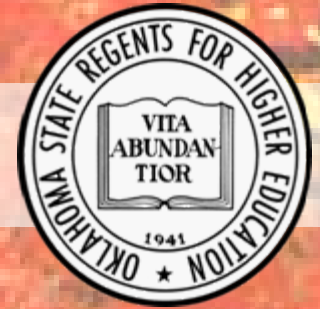
State *Per Capita* Personal Income v. Share of Adult Population with Bachelor's Degree or Higher



The Impact of Education on Individuals: Lifetime Earnings

Education Level	Estimated Lifetime Earnings	Difference Compared to High School Graduate
Less than 9th grade	\$976,350	-\$478,903
High school dropout	1,150,698	-304,555
High school graduate	1,455,253	0
Some college, no degree	1,725,822	270,569
Associate degree	1,801,373	346,120
Bachelor's degree	\$2,567,174	\$1,111,921
Master's degree	2,963,076	1,507,823
Doctorate	3,982,577	2,527,324
Professional degree	5,254,193	3,798,940

Enrollment

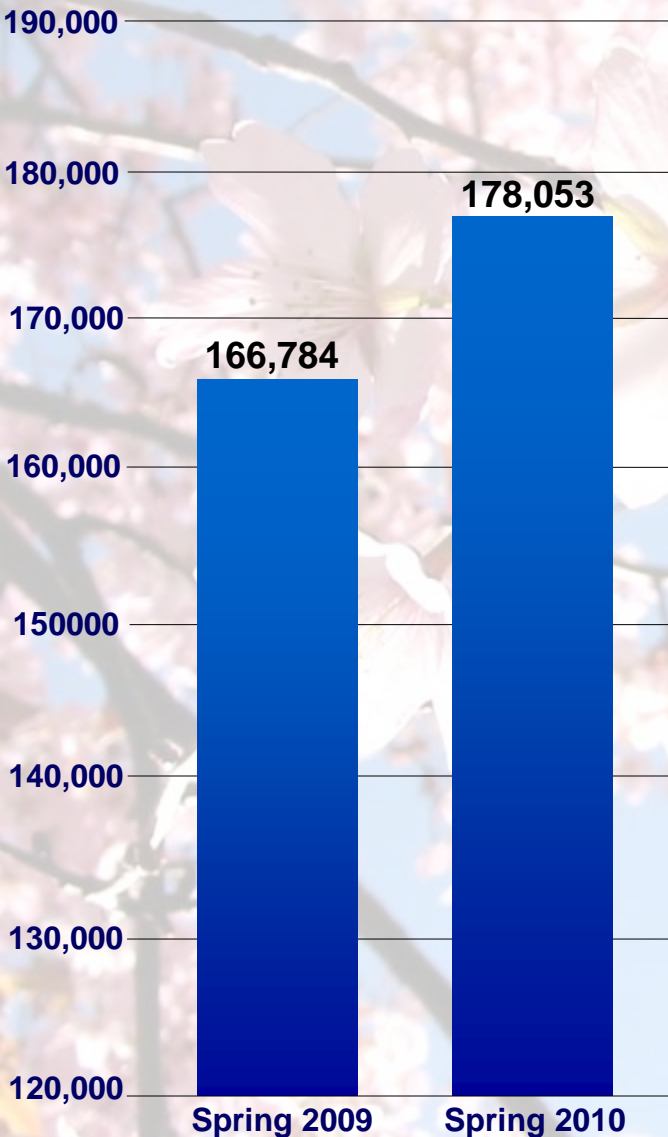


Record Fall Enrollment

- **Overall Headcount Increased by 10,291 in Fall 2009**
- **First Time Freshman increased by 12.3 percent**

Source: 2009 Fall Preliminary Enrollment Report
References Public Institutions

Enrollment



Record Spring Enrollment

- **Overall Headcount Increased by 11,269 in Spring 2010**
- **First Time Freshman increased by 31.7 percent**

Source: 2010 Spring Preliminary Enrollment Report
References Public Institutions

Fall 2010 Preliminary Enrollment

Overall
Enrollment
Increase of
3.3% over Fall
2009



Source: 2010 Fall Preliminary Enrollment Report
References Public Institutions



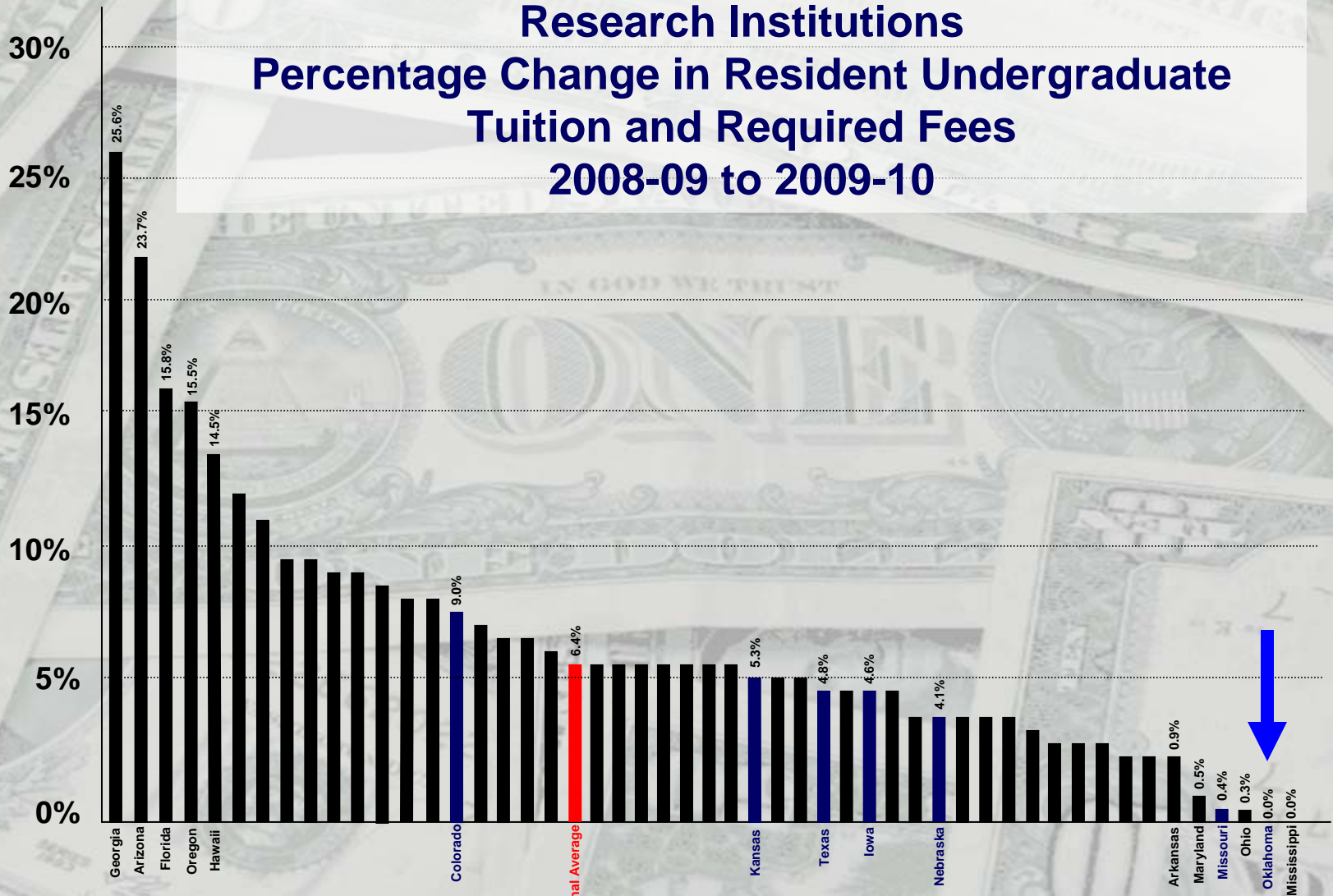
Spring 2011 Preliminary Enrollment

Source: 2011 Spring Preliminary Enrollment Report
References Public Institutions

Increase of 15,504 students
since Spring 2008
(8.5%)

Affordability

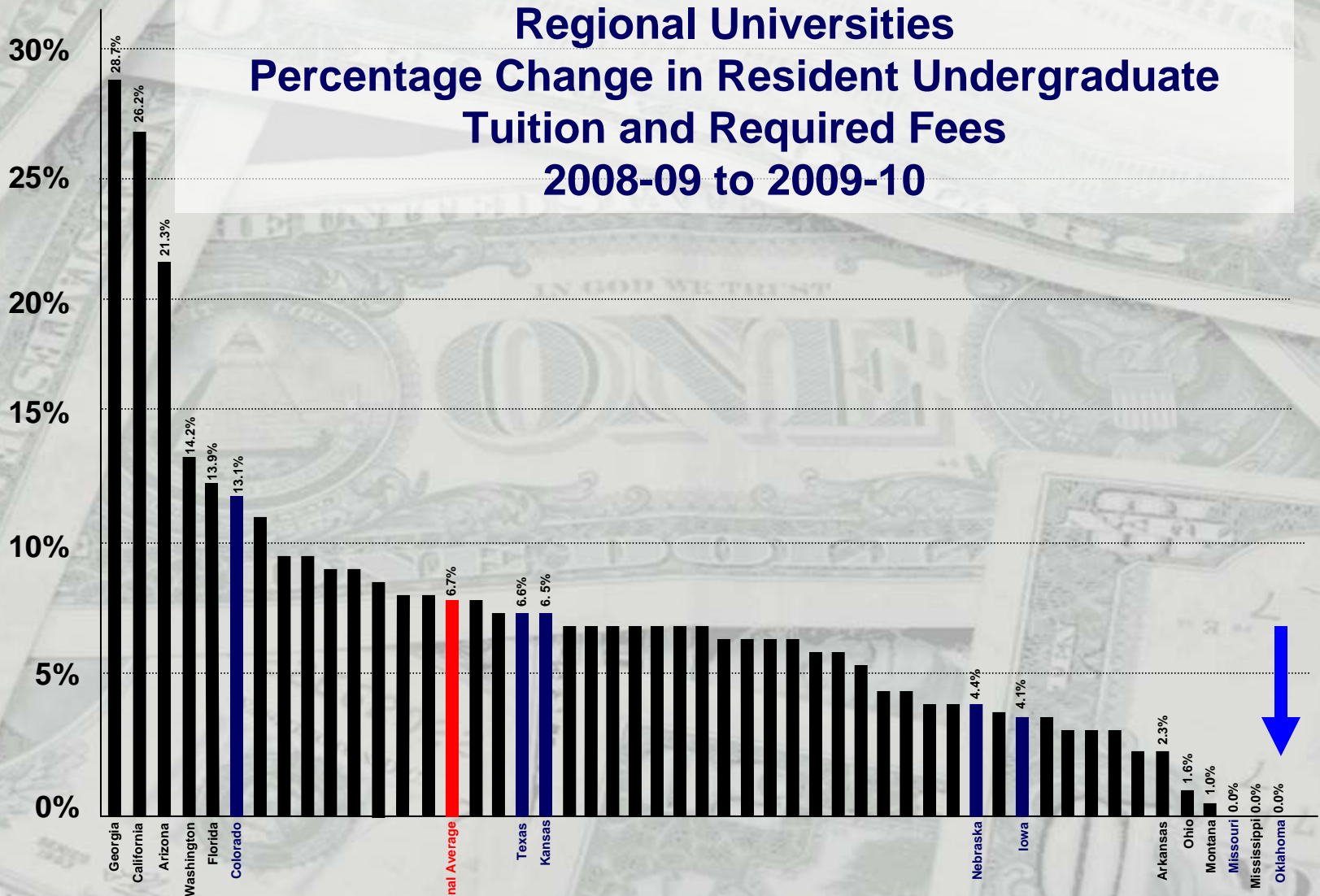
Research Institutions Percentage Change in Resident Undergraduate Tuition and Required Fees 2008-09 to 2009-10



Source: Washington Higher Education Coordinating Board 2009-10 – Tuition and Fee Rates-National Comparison

Affordability

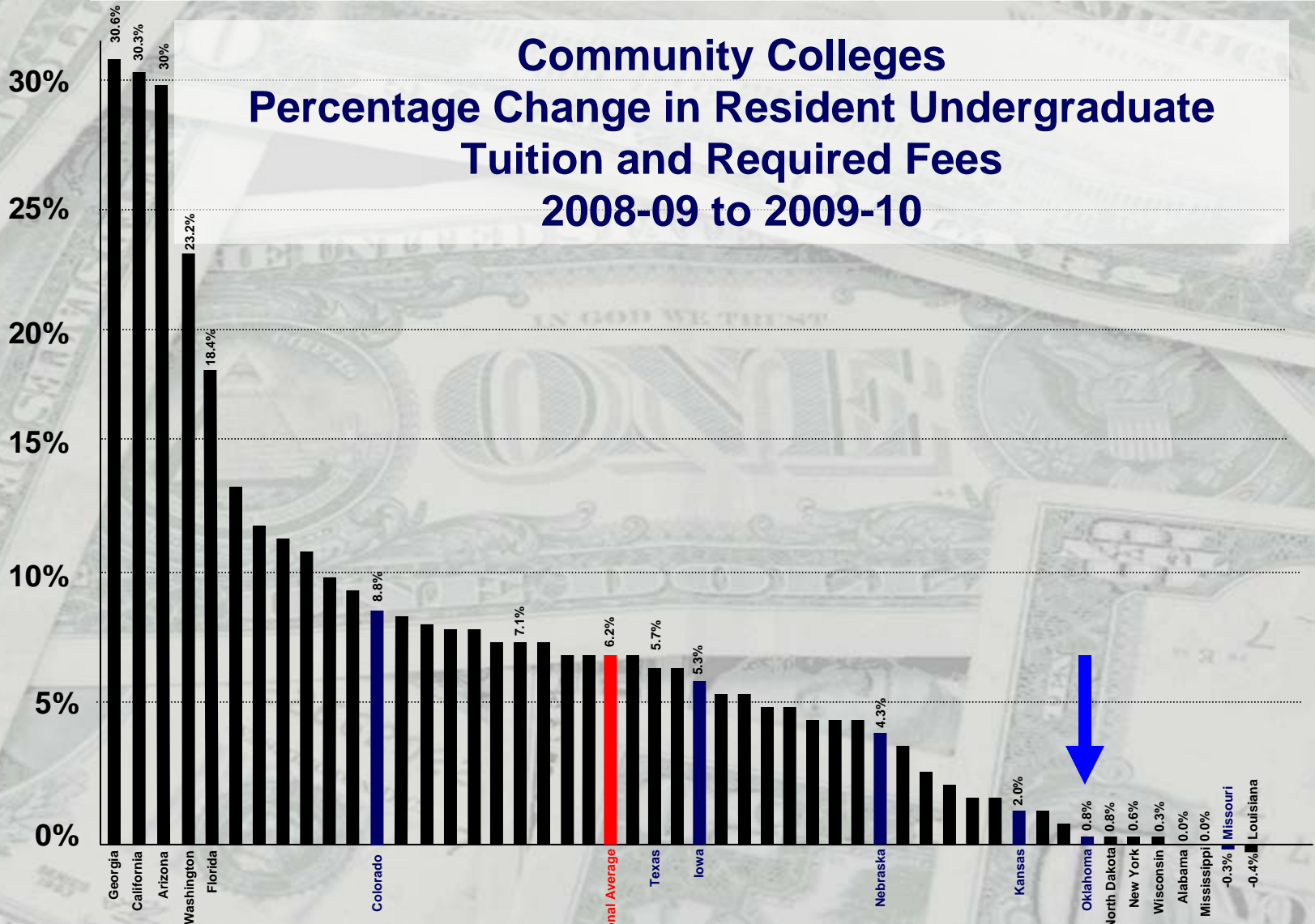
Regional Universities Percentage Change in Resident Undergraduate Tuition and Required Fees 2008-09 to 2009-10



Source: Washington Higher Education Coordinating Board 2009-10 – Tuition and Fee Rates-National Comparison

Affordability

Community Colleges Percentage Change in Resident Undergraduate Tuition and Required Fees 2008-09 to 2009-10



Source: Washington Higher Education Coordinating Board 2009-10 – Tuition and Fee Rates-National Comparison

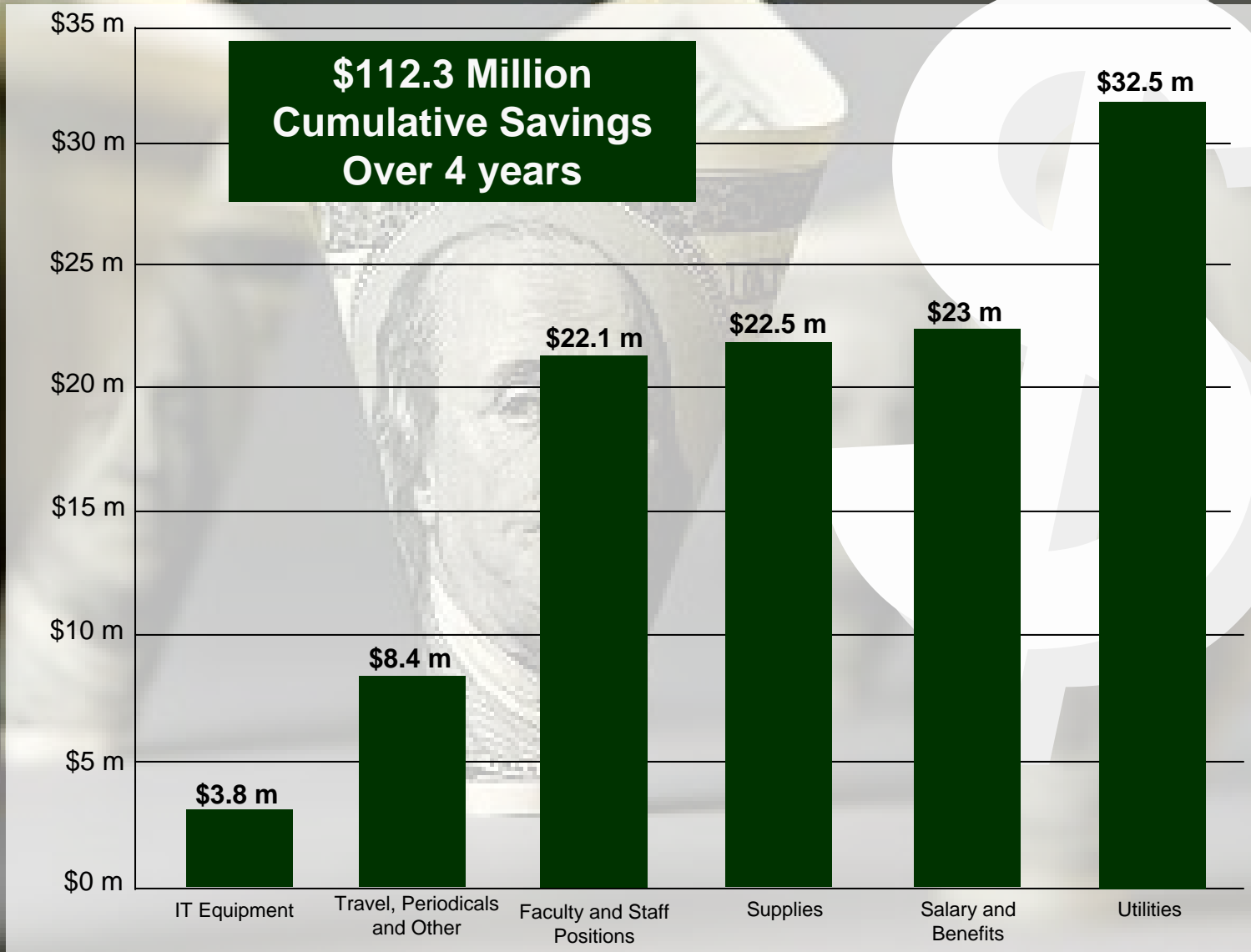
COST SAVINGS

All Oklahoma institutions of higher education have decreased their need for additional funds for mandatory operating obligations by cost savings efforts.

A total cost savings of \$112.3 million from 2009-12.

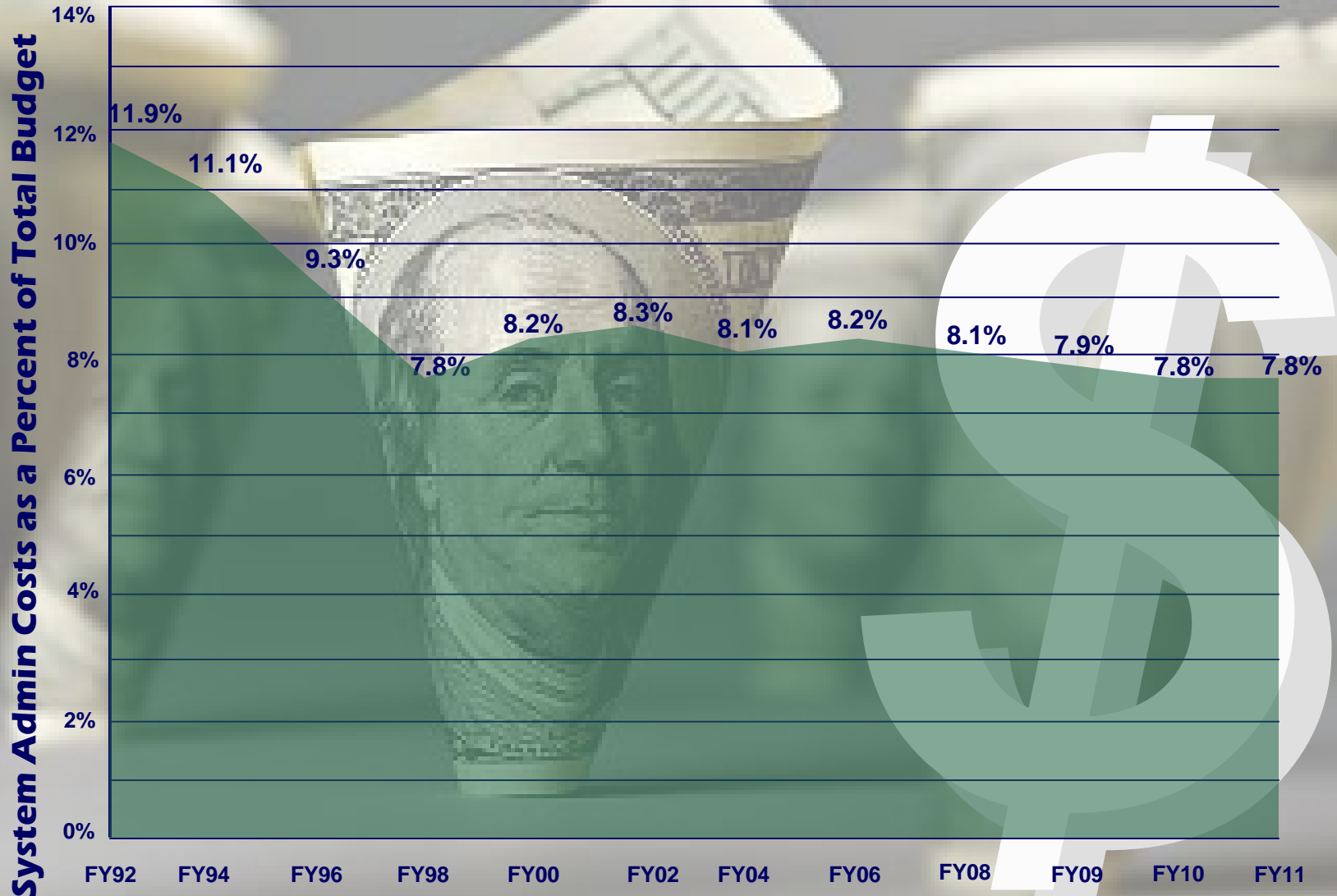
- Energy Conservation
- Energy Conversion
- Changes in Salaries and Benefits
- Changes and Elimination of Positions
- Reduction in Supplies and IT Expenditures

COST SAVINGS



System Efficiencies

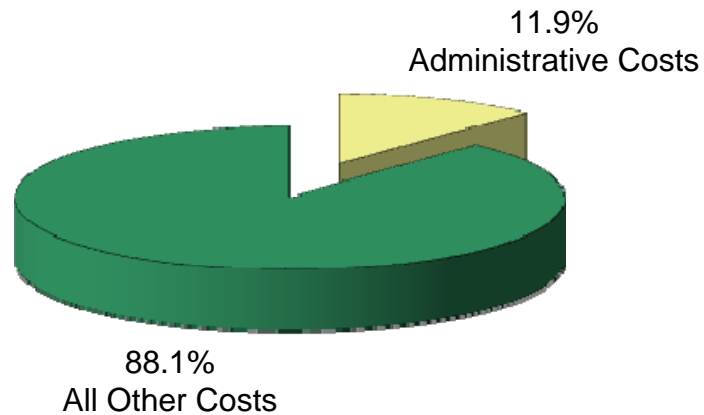
Total System Administrative Costs FY92-FY09



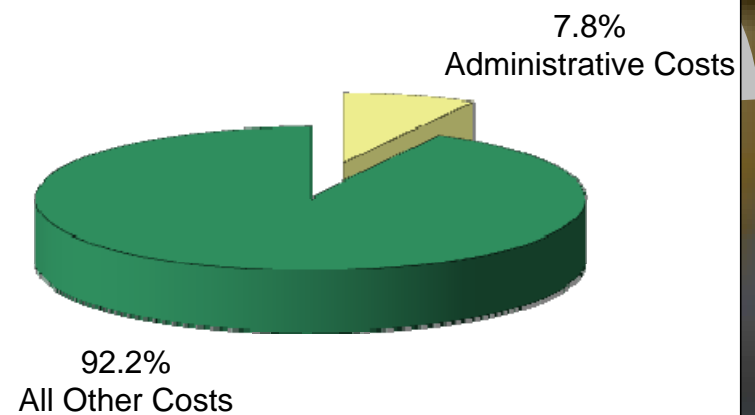
System Efficiencies

Administrative Costs reduced 1/3 over 19 years

FY 1992



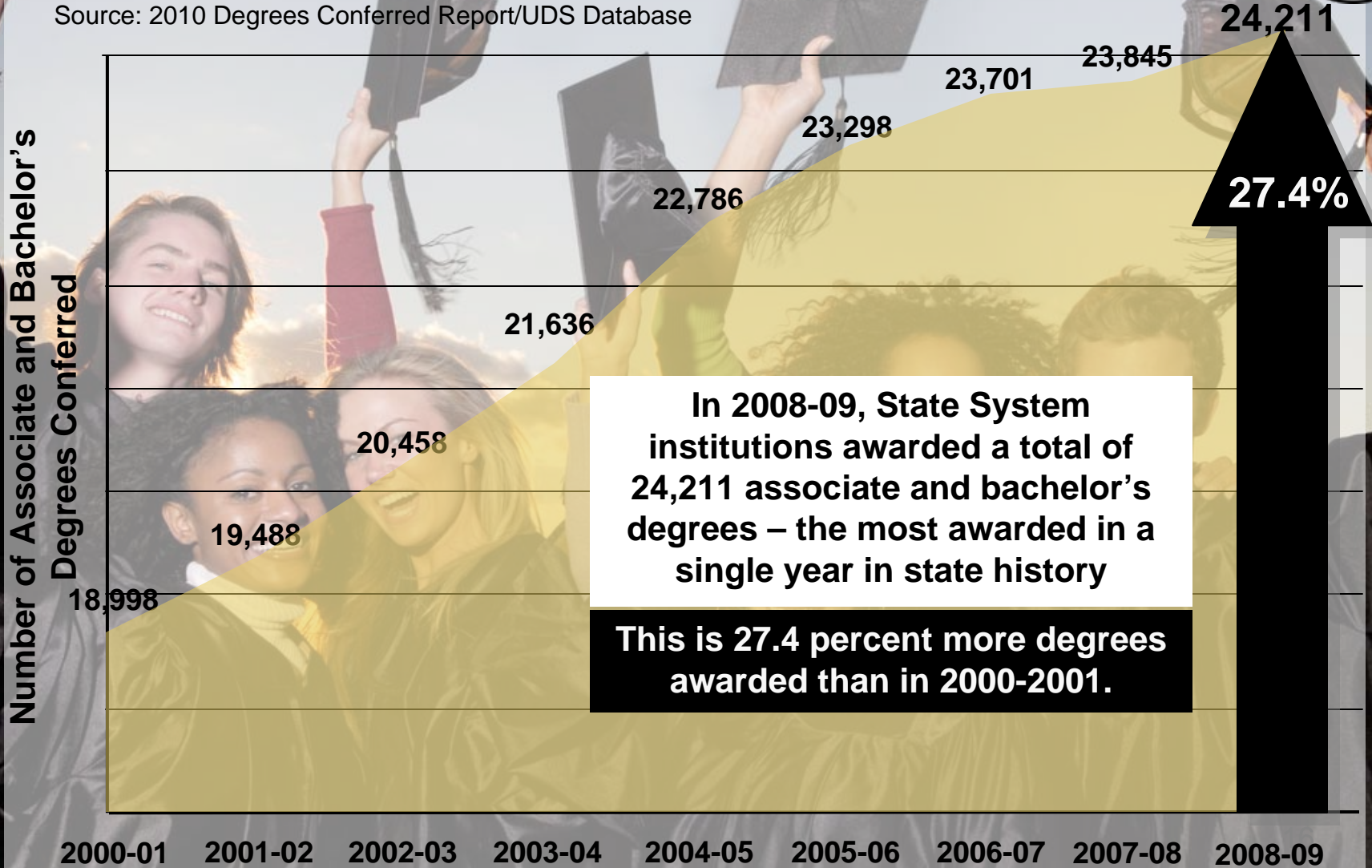
FY 2011



Degrees Conferred by Oklahoma Public Colleges and Universities



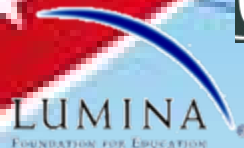
Source: 2010 Degrees Conferred Report/UDS Database



COMPLETE COLLEGE

AMERICA

- **Oklahoma is 1 of 24 states accepted to participate in the Complete College America project to help more Americans achieve their dream of a college education.**
- **Oklahoma was accepted because the State has made a commitment to significantly increase the number of students successfully completing college and closing educational attainment gaps for traditionally underserved populations.**
- **Five national foundations are providing multi-year support to CCA: the Carnegie Corporation; the Gates Foundation; the Ford Foundation; the Kellogg Foundation; and Lumina Foundation for Education.**



2011 Legislative Agenda



A smiling woman with dark hair and glasses, wearing a blue shirt, is pointing her right hand towards a green chalkboard. The chalkboard has some faint white markings. The image is partially obscured by a semi-transparent grey banner at the top containing the title.

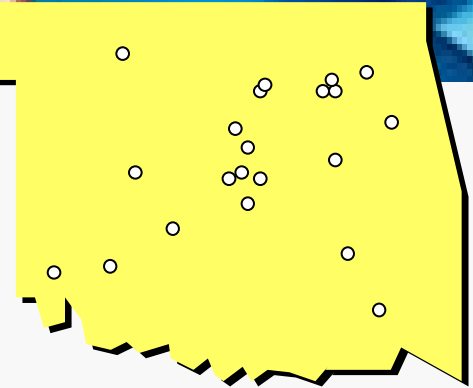
2011 Legislative Agenda

Endowed Chairs Program

- The endowed chairs program is one of the most successful public/private partnerships where private donations are matched dollar for dollar with public funds.
- Dollars are used to help fund faculty and research positions, new programs and lectureships.
- A bond issue was authorized in 2008 to fund \$100 million of the current 367 million dollar backlog and in 2010 the legislature and Governor funded the debt service for this \$100 million bond issue.

Endowed Chair Backlog

**20 Institutions and Branch Campuses
Have 712 Accounts Awaiting Funding**



Institution	Number of Accounts	Institution	Number of Accounts
Cameron	15	OUHSC	180
ECU	4	OU Tulsa	44
NSU	3	Rogers	1
NWOSU	9	SEOSU	1
Langston	1	SWOSU	5
OSU	230	TCC	17
OSU-OKM	4	UCO	3
OSU-Tulsa	7	USAO	1
OSUCHS	22	WOSC	4
OSU Vet	7		
OU	154	Total Accounts	712



2011 Legislative Agenda

Concealed Weapons Legislation

- **The State Regents, all 25 institutions, and all governing boards believe that there is no scenario where placing guns on campuses will do anything other than create a more dangerous environment for our students and faculty on campus.**
- **In past three legislative sessions, legislation has been introduced or discussed that would allow certain students to carry concealed weapons onto college property we have successfully defeated the legislation to date.**
- **It will continue to be a priority of the system to ensure this legislation is not law.**



2011 Legislative Agenda



- **OK Promise is one of the most successful college access scholarship programs in the country.**
- **There has been legislation introduced in past legislative sessions to change the requirements of the program that would reduce the number of students eligible to participate.**
- **Changing the requirements of OK Promise would alter the intent of the program, which is to ultimately provide students more access to college which will result in more Oklahoma college graduates.**
- **We oppose any legislation that would change the program's focus on access.**

Legislation

HB1663 – Representative Leslie Osborn and Senator John Ford
The legislation would lower the second income limit of an Oklahoma's Promise student from \$100,000 to \$75,000 at the time of college entry.

Update - The bill passed out of the House on 3/9/11 with a vote of 82-15.

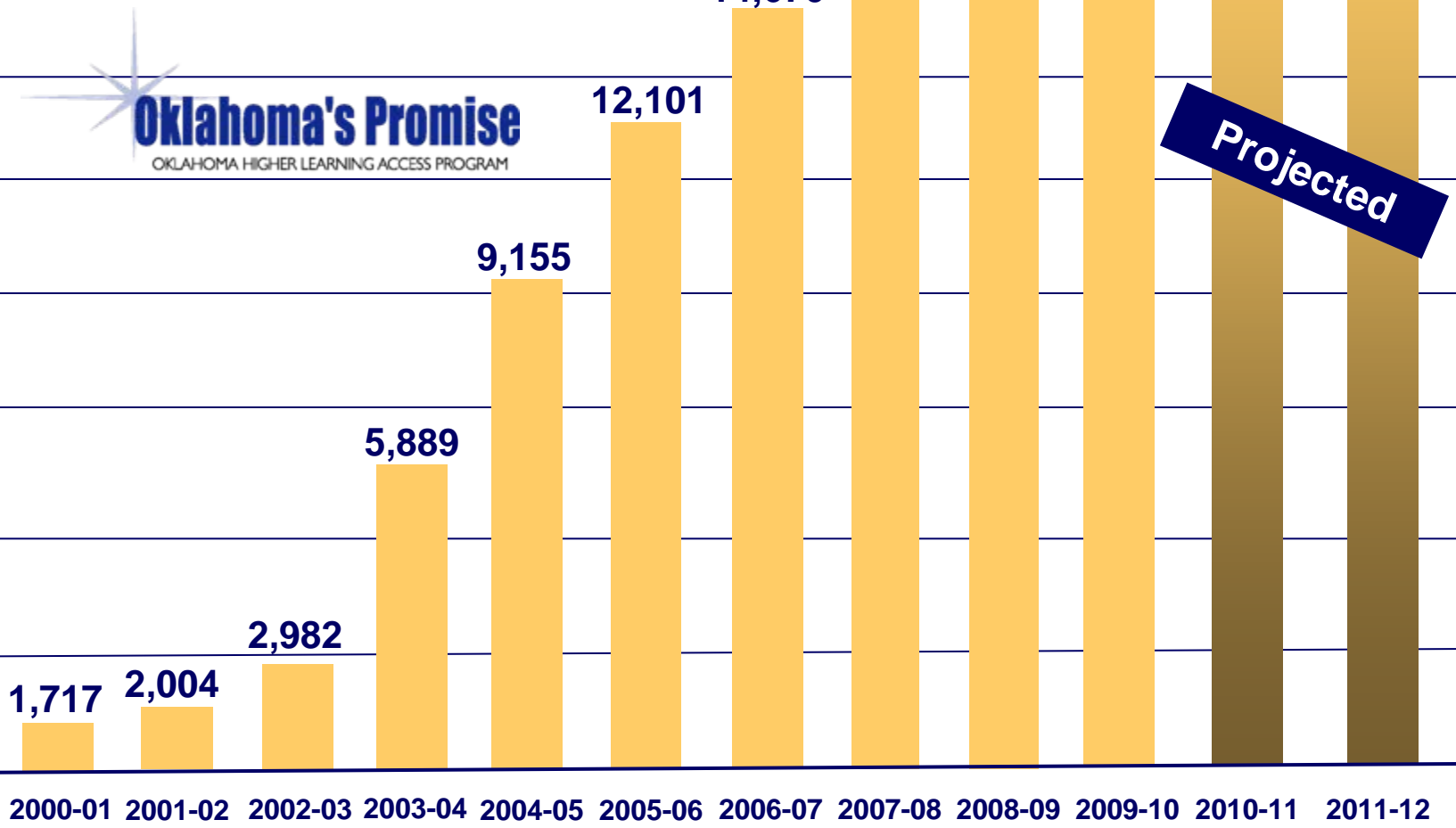
SB610 – Senator John Ford and Representative Todd Thomsen
The bill states the Federal adjusted gross income should be used to verify the student's income and that it does not exceed \$100,000 at the time they enter college. The legislation also delays additional GPA requirements.

Update – The bill passed out of Senate Appropriations Committee on 3/2/11.



Number of Oklahoma's Promise Scholarship Recipients

As of 10-20-10. Assumes 1% annual increases in OK Promise high school enrollment and 65% completion rate of high school requirements for scholarship eligibility.



Oklahoma's Promise
OKLAHOMA HIGHER LEARNING ACCESS PROGRAM

Projected

GRANTSMANSHIP

- **Oklahoma's 25 College and Universities have an active and productive grantsmanship program which contributes to the institutions funding outside the appropriations process.**
- **In 2010, our institutions reported the receipt of \$506.6 million in competitive grants for program development and research.**

Source: Oklahoma State Regents for Higher Education

Performance Funding

A collage of graduates in caps and gowns, with a semi-transparent text box overlaid. The graduates are smiling and wearing blue caps with gold tassels. One graduate in the foreground is wearing a gold and blue sash with the word 'HONORS' written vertically. The background is a bright, outdoor setting with other graduates visible.

- Performance Funding is designed to financially support the State Regents' Brain Gain initiative, adding a component to the traditional funding formula and rewarding institutions for performance in graduation rates and retention rates.
- Performance funding has been a key component in driving Oklahoma's increase in degrees conferred.
- Oklahoma's Performance Funding initiative is nationally recognized.
- Performance Funding reached over \$2.1 million in FY11.

FY'12 Appropriations Request

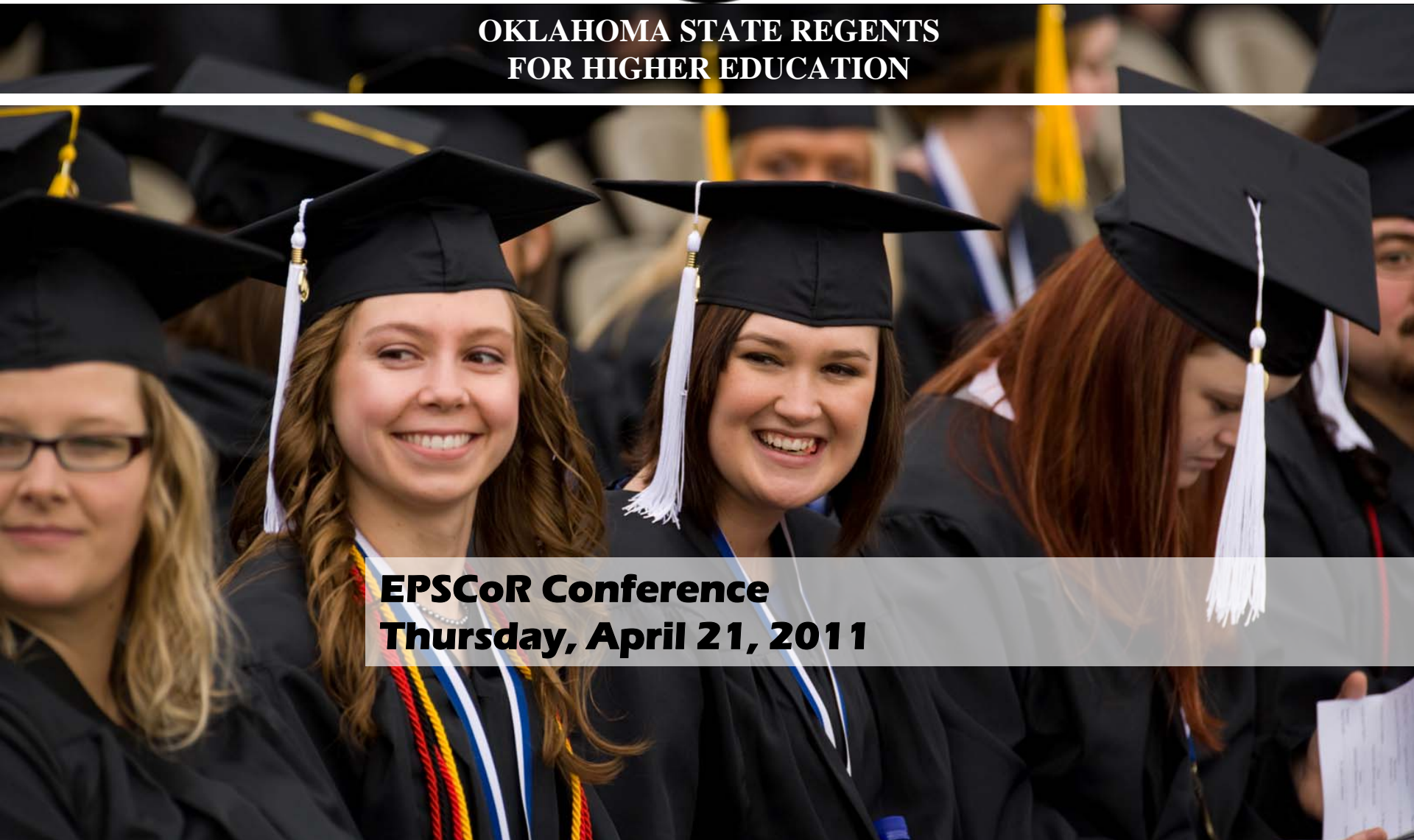
Total New FY'12 State Funds **\$115,599,320**

% Difference from Total FY'11 Appropriation **5.56%**

Governor Fallin's Recommendation
Education cut – 3% reduction
Other state agencies – 5% reduction



**OKLAHOMA STATE REGENTS
FOR HIGHER EDUCATION**



**EPSCoR Conference
Thursday, April 21, 2011**